

Is it checkmate?

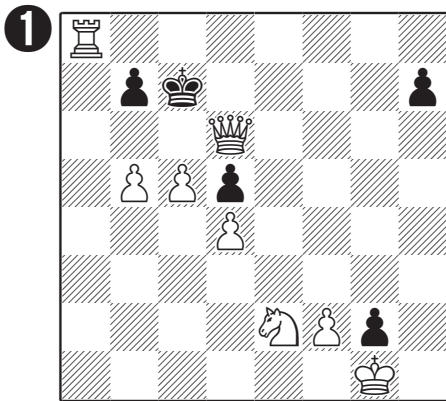


In each of these pictures, it's black's turn to move. You have to work out **whether black is in checkmate** or not.

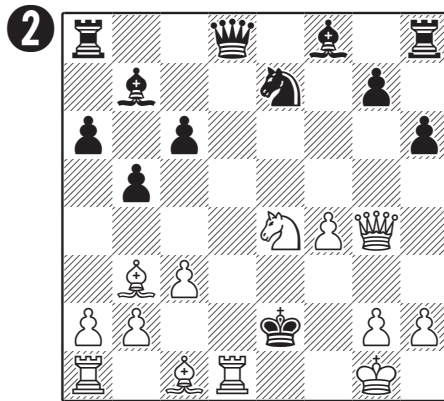
Once you've worked it out, tick 'yes' if you think it's checkmate and 'no' if it isn't.

If it's not checkmate, please also show a move that black can make by drawing an →

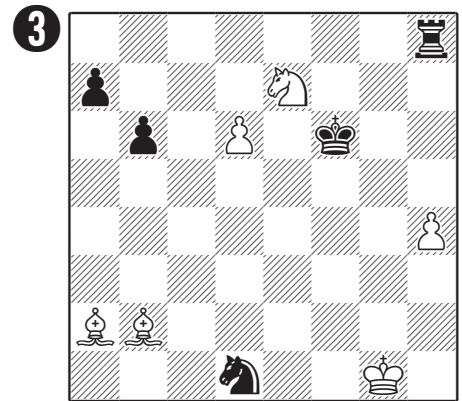
Remember - look out for **C**apturing, **B**locking and moving the king **A**way.



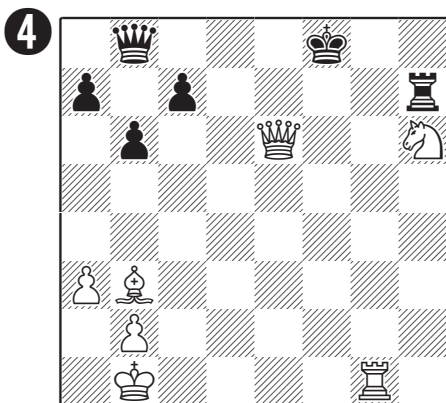
- Yes, it is checkmate
- No, it's not checkmate



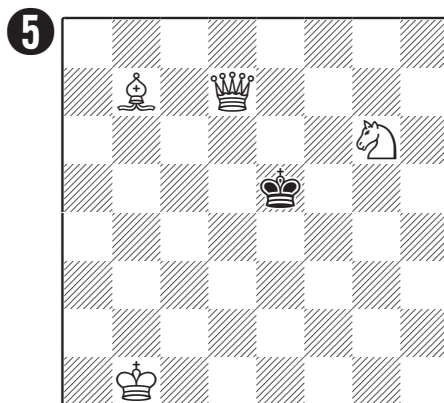
- Yes, it is checkmate
- No, it's not checkmate



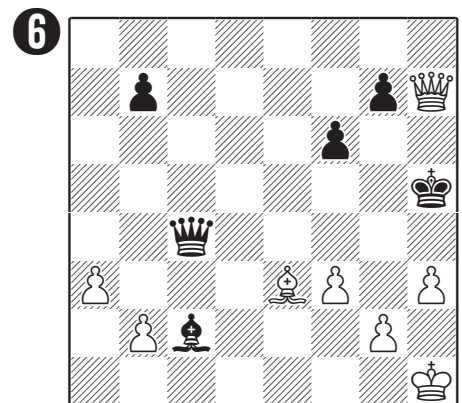
- Yes, it is checkmate
- No, it's not checkmate



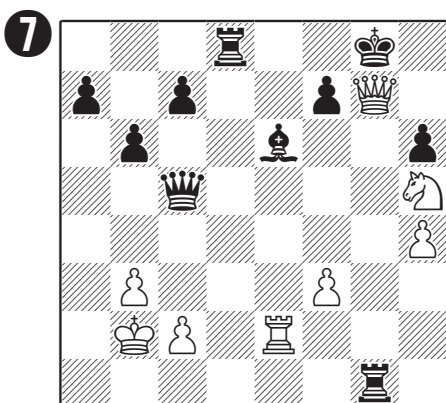
- Yes, it is checkmate
- No, it's not checkmate



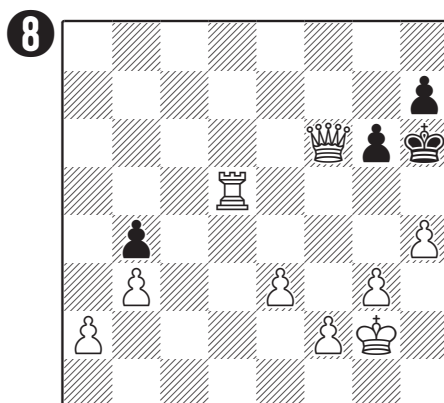
- Yes, it is checkmate
- No, it's not checkmate



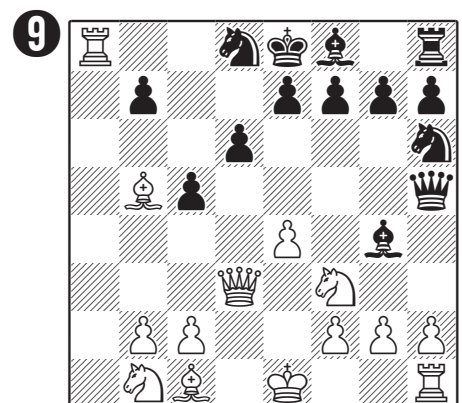
- Yes, it is checkmate
- No, it's not checkmate



- Yes, it is checkmate
- No, it's not checkmate



- Yes, it is checkmate
- No, it's not checkmate



- Yes, it is checkmate
- No, it's not checkmate