

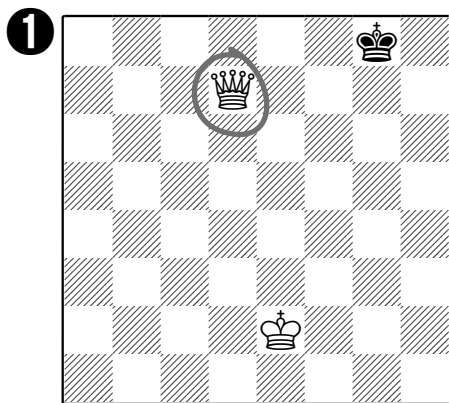
Who is ahead?



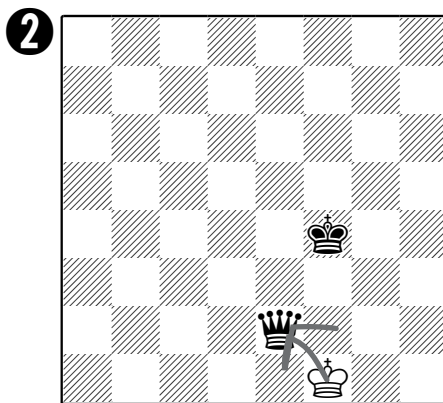
Here are the answers - how did you get on?

Probably the easiest way of working out who's ahead is to **pair up** the big pieces and see what's left over, and to count the pawns. Then compare the "odd ones out" who haven't been paired up. This is much quicker than trying to add up how many points each player has, especially if there are lots of pieces on the board.

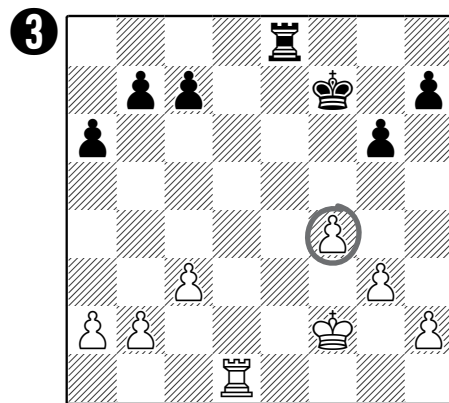
So for these answers, the "odd ones out" have been circled.



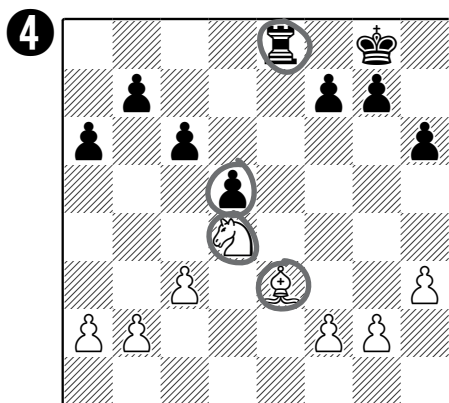
~~White / Black~~ is ahead
by 9 points.



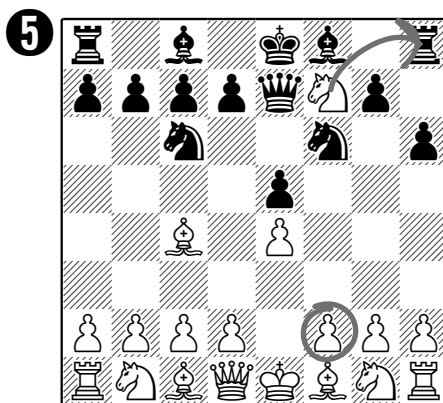
~~White / Black~~ is ahead
by Equal.



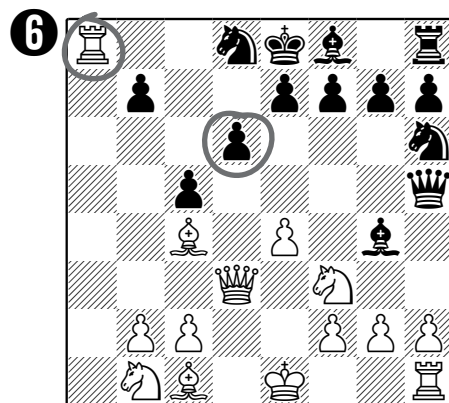
~~White / Black~~ is ahead
by 1 point.



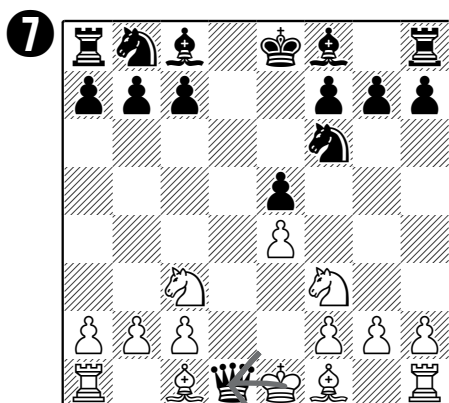
~~White / Black~~ is ahead
by Equal.



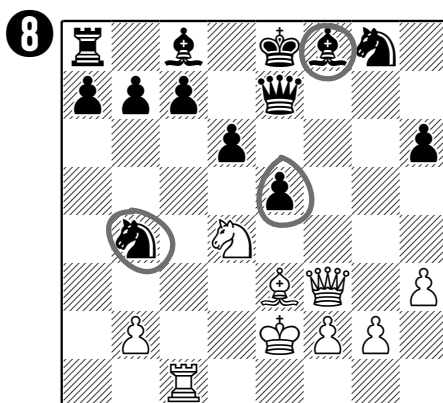
~~White / Black~~ is ahead
by 6 points.



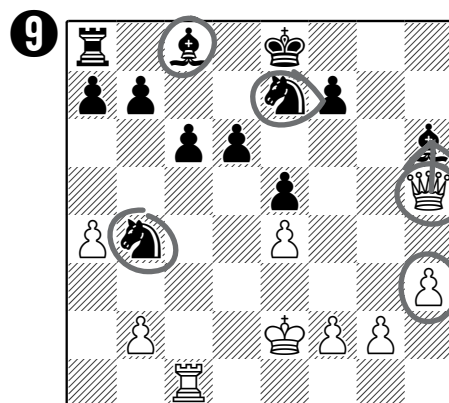
~~White / Black~~ is ahead
by 4 points.



~~White / Black~~ is ahead
by Equal.



~~White / Black~~ is ahead
by 7 points.



~~White / Black~~ is ahead
by 1 point.

