

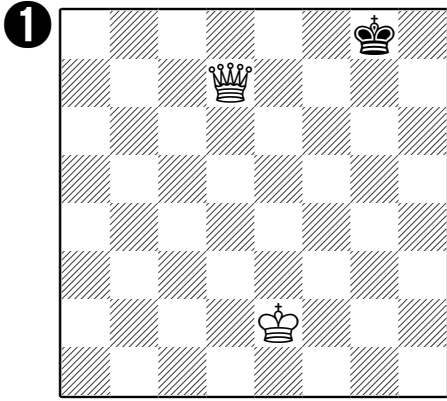
Who is ahead?



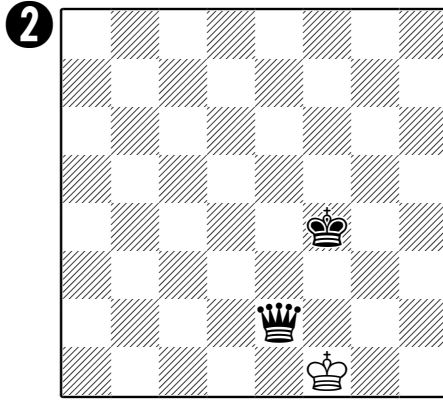
In each of these pictures, it's white's turn to move. You have to decide **which player is ahead, and by how much**. The best way is to **pair up** the big pieces, and count the pawns. Then compare the "odd ones out" that aren't in pairs to see who's ahead.

Remember - it's white's move - so you'll need to look and see if white's about to capture any of black's pieces for nothing before deciding who's ahead!

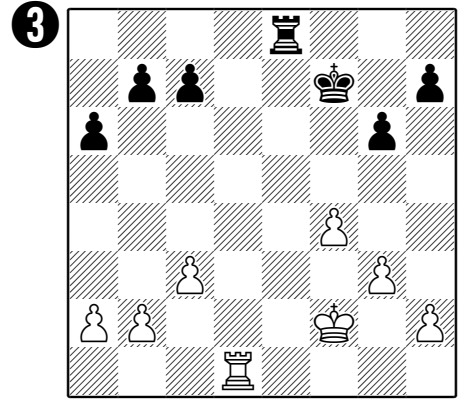
Once you've worked it out, fill in your answer under the picture. If it's equal, just write 'equal'. If white has a capture that makes a difference, draw it in with an \rightarrow



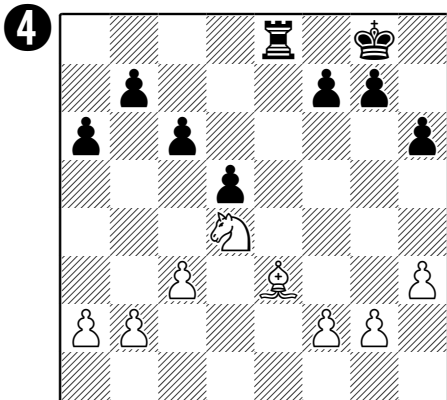
White / Black is ahead
by _____.



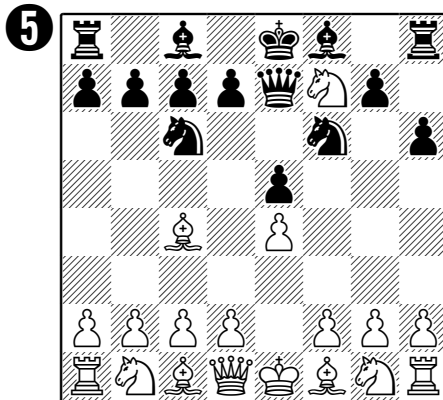
White / Black is ahead
by _____.



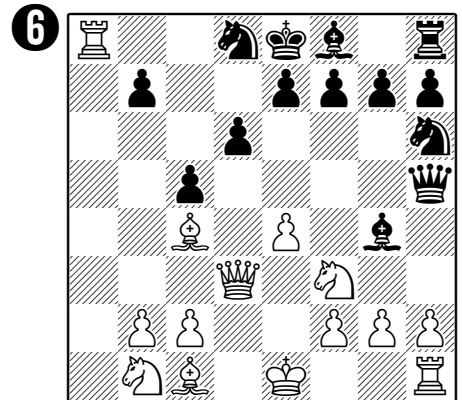
White / Black is ahead
by _____.



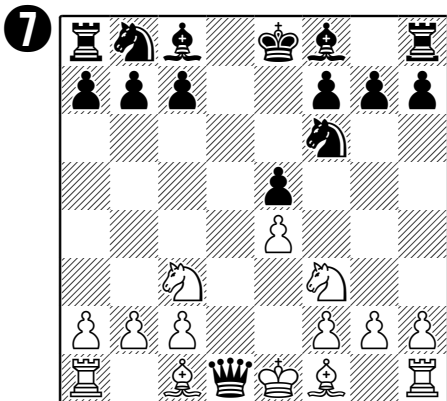
White / Black is ahead
by _____.



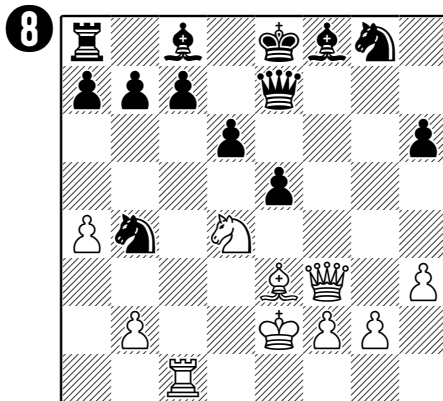
White / Black is ahead
by _____.



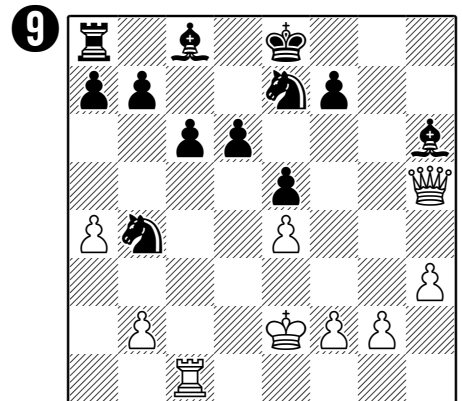
White / Black is ahead
by _____.



White / Black is ahead
by _____.



White / Black is ahead
by _____.



White / Black is ahead
by _____.

